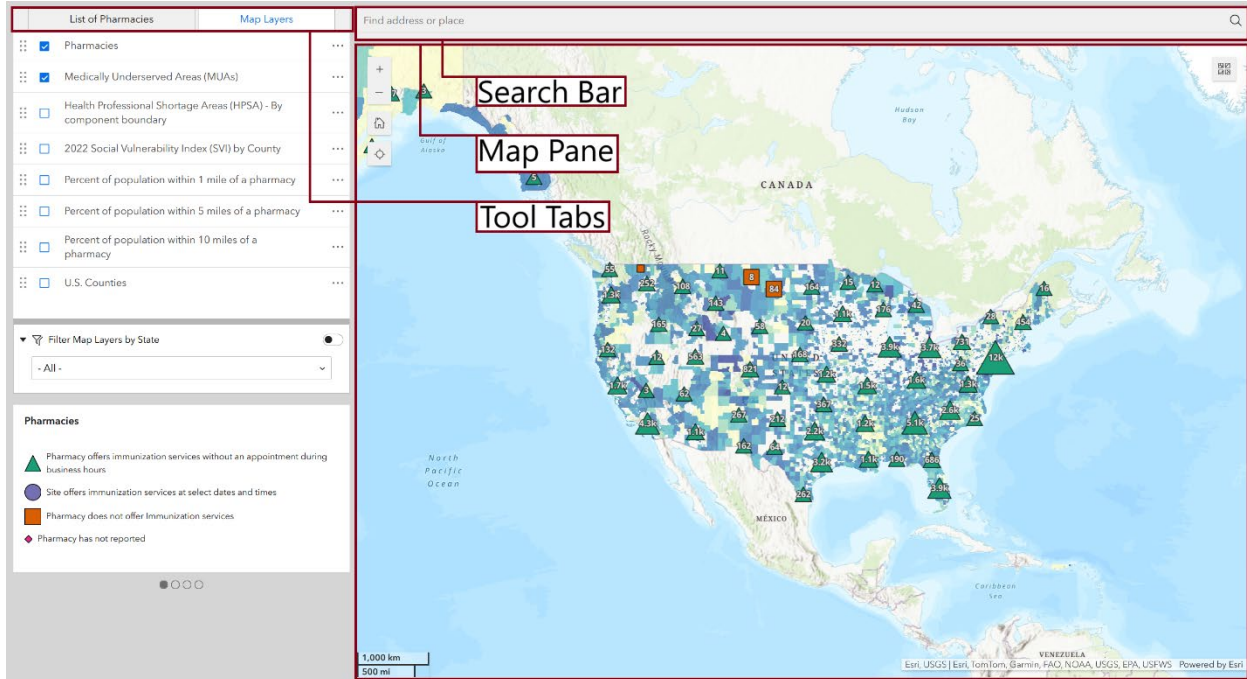
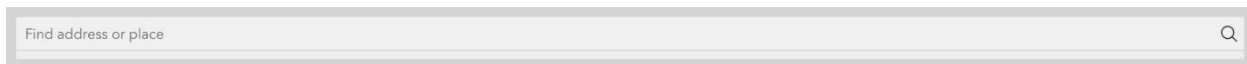


Using the Provider Pharmacy Vaccine Access Map Tool



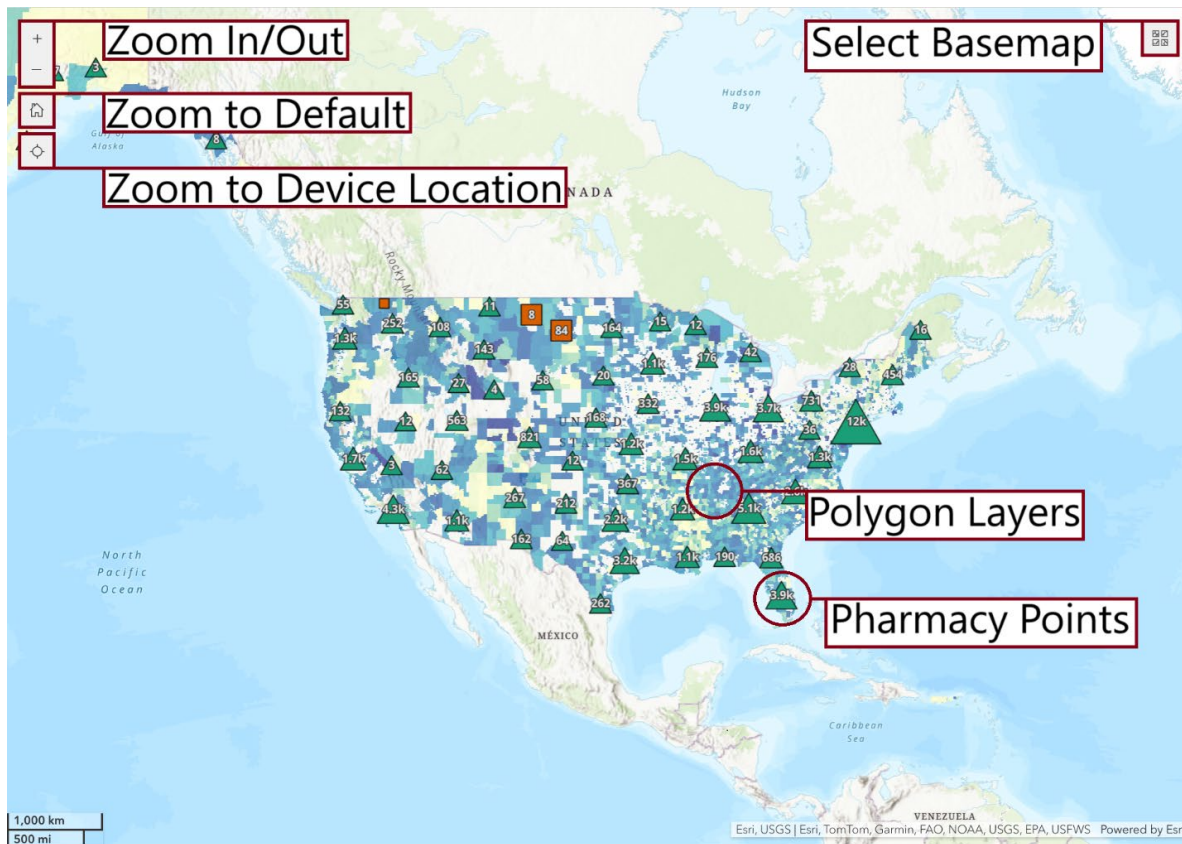
The three basic areas of the provider vaccine access map tool: search bar, map pane, and tool tabs.

Search Bar:



The search bar is the quickest method to zoom into a particular location. To use this feature, type in an address, city/town, zip code, or any other location name. Press the “enter” key or select a result from the search bar. The map will then zoom and pan to the entered location.

Map Pane:



The map pane is the primary viewing area of the mapping tool. The point locations for pharmacies and the different polygon layers will be visualized here.

Buttons for zooming in/out, zooming to the default level, and zooming to the device location can be found in the top left. The button for the base map can be found in the top right.

Zooming and panning can also be performed using a mouse or with touch features (on mobile/tablet) as it is done in Google Maps or other apps.

Pharmacy points and polygon layers can be selected by clicking on them. A pop-up box will display the information of the layer. While zoomed out, points are grouped together into clusters. By zooming in or selecting a cluster, the clusters can be broken into individual pharmacies.

List of Pharmacies Tab

The screenshot displays the 'List of Pharmacies' tab in a map application. The tab is titled 'List of Pharmacies' and 'Map Layers'. The list contains several entries, each with a green triangle icon and a pharmacy name followed by a number. A red box highlights the first entry: 'COSTCO PHARMACY #63'. A large text overlay reads 'Pharmacies on the Map Pane'. Below the list is a pagination control showing page 1 of 5036. A legend titled 'Pharmacies' is visible at the bottom, with a red box highlighting the text 'Pharmacy List Pages'.

Pharmacy Name	Number
COSTCO PHARMACY	#63
FRED MEYER PHARMACY	
CARRS PHARMACY	#1817
FRED MEYER PHARMACY	
WALGREENS	#12679
WALMART PHARMACY	10-4359
COSTCO PHARMACY	#10

Pharmacies

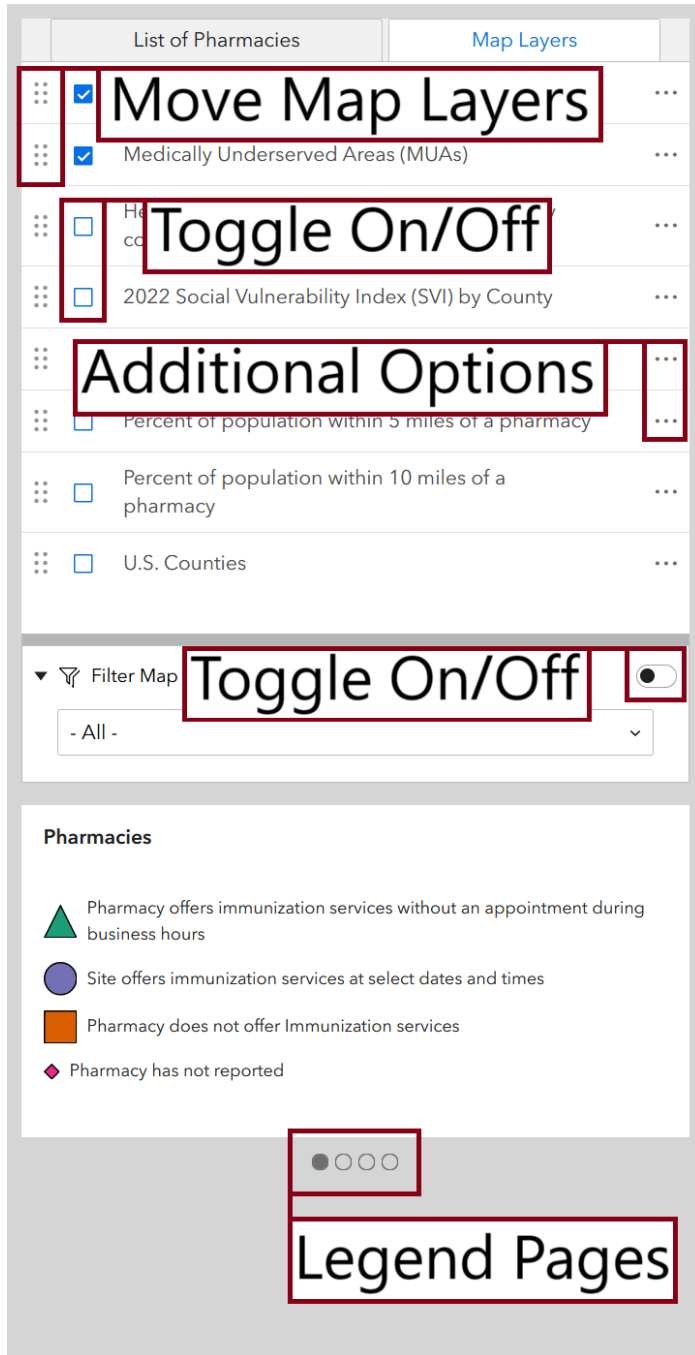
- Pharmacy offer business hours
- Site offers imm
- Pharmacy does not offer Immunization services
- Pharmacy has not reported

The pharmacies list tab is a display of all pharmacies currently visible in the map pane. By selecting a pharmacy, the map pane will zoom to the pharmacy. If there is more than one page

of pharmacies, then the additional pharmacies can be displayed by leftclicking on the page numbers at the bottom of the tab.

The legend displays an explanation of the visualization for the layers in the current map pane. Scroll to additional legend pages by leftclicking on the dots at the bottom of the legend.

Map Layers Tab



The map layers tab contains toggleable polygon layers. To toggle the layers, click the check boxes on/off. To move a map layer on top of another in the map pane, leftclick the six dots to the

left of each layer name and drag the layer into position. Additional options for changing layer transparency can be found by clicking the three dots to the right of each layer name.

The point and polygon layers can be filtered by state. First, set the filter toggle to the on position. Then, select the state you wish to filter to. As the drop-down menu for the filter can only show states currently visible in the map pane, zoom out or select the zoom to default button on the map pane for the best results.

The legend displays an explanation of the visualization for the layers in the current map pane. Scroll to additional legend pages by left-clicking on the dots at the bottom of the legend.